



© Gwenn Dubourthoumieu (Hi)

The Signal project

Signal is a project by Atlas Logistique that aims to identify the degree of vulnerability and the disaster recovery capacity of communities in fragile contexts.

It also helps to ensure that humanitarian aid strategies take into account populations located in areas with the highest logistical constraints, and thus strengthen their recovery capacity and resilience.



A young man with short dark hair, wearing a maroon polo shirt under a tan utility vest, is focused on writing with a blue pen on a document. The vest features a blue logo that says 'Hi' with a hand icon. In the background, another person in a similar tan vest is blurred, also appearing to be part of the same activity. The setting is outdoors with a bright, slightly overcast sky.

1. Improve targeting and prioritisation of the least resilient populations;
2. Understand and act on the most damaged logistical environments in order to improve the efficiency of humanitarian responses and the resilience of populations;
3. Limit the negative impacts of humanitarian interventions on the population's recovery capacities.

Atlas Logistique proposes a comparative and holistic approach to vulnerability via the concept of “logistics vulnerability”. It allows data on logistics and access to be used as a framework for understanding the vulnerability of populations and their capacity for recovery.



The project is built and implemented in collaboration with humanitarian and public actors, affected communities, local authorities and local supply chain actors.



The project raises awareness among decision-makers and humanitarian operators on the issues of logistics vulnerability and of community recovery capacity. It supports actors in the mobilisation of tools, data, analyses and recommendations.



Although aid actors (operators, decision-makers, coordinators, donors) are the direct beneficiaries of this humanitarian-to-humanitarian (H2H) project, the most vulnerable populations are at the heart of the activities.



The Signal project cross-references

Logistics Vulnerability Index

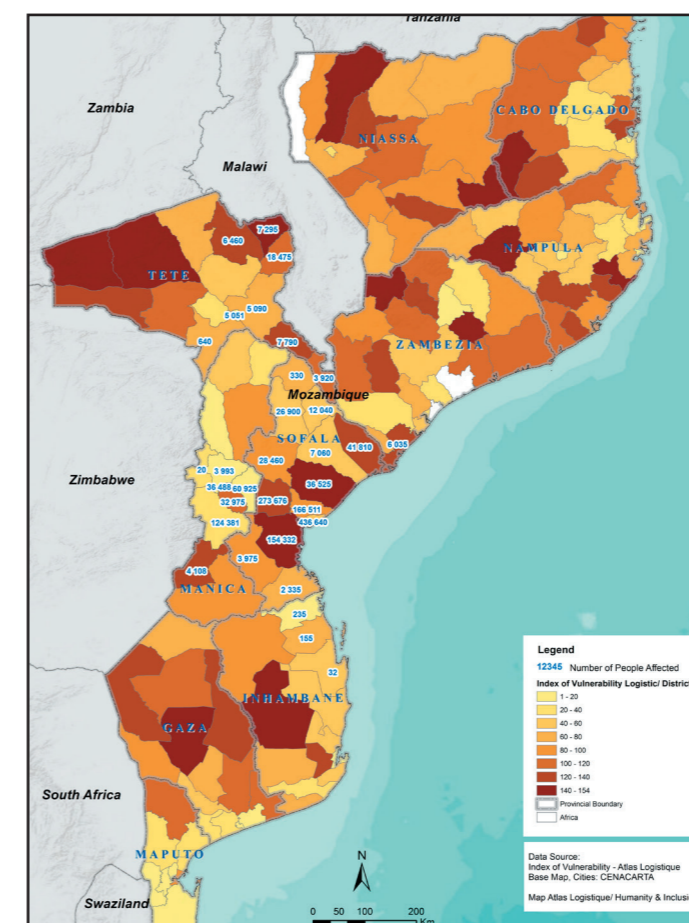
The LVI is a comparative analysis tool that helps to evaluate the capacity of logistical structures to support community recovery. The LVI is calculated at a country level and is available on several geographical scales. Based on logistics and access indicators calculated with secondary and structural data, the LVI allows for the analysis and classification of certain areas within a country according to the ability of logistical environments to enable communities to cope with and recover from a crisis, and to access services and livelihoods.

Presented in map or table format, the LVI is a layer that can be used to illustrate the resilience and recovery capacity of populations, to prioritise areas where humanitarian assistance is most needed at the country(humanitarian needs overview), regional and district levels, and to understand the logistical constraints of a humanitarian project in a target area.

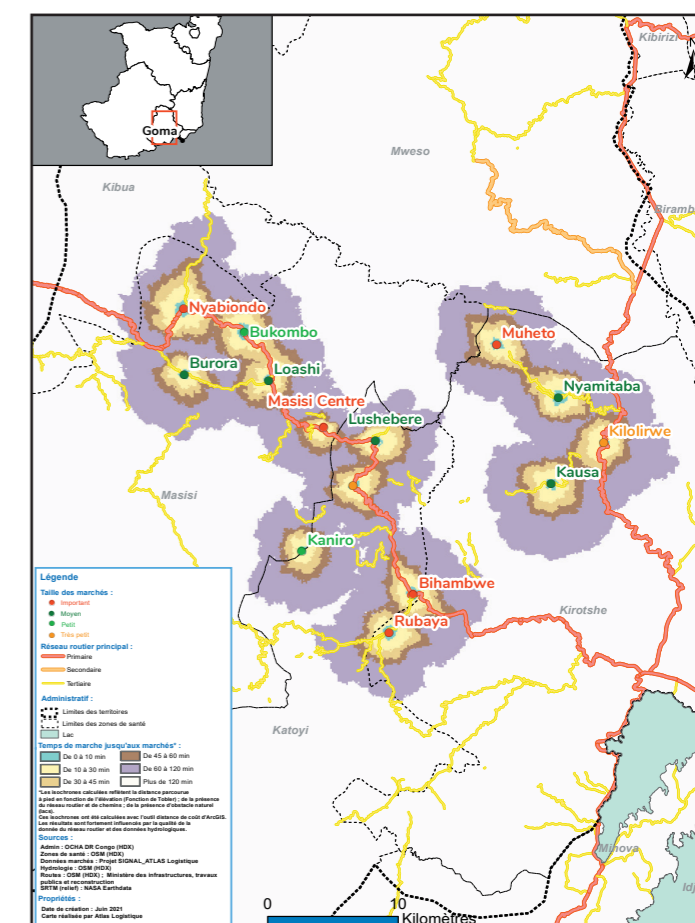
Assessment of local logistics resilience

This tool aims to collect, analyse and disseminate data on the state and quality of local logistical structures, as well as the capacity of these structures to fulfil their logistics functions under normal circumstances and to maintain these functions following a hazard event. These assessments are carried out in the most logistically vulnerable districts, or those prioritised by humanitarian actors.

An assessment of local logistics resilience makes it possible to understand the mobility of goods and to analyse access and logistical constraints, as well as the strategies and storage capacities of local markets. Following a crisis, the Signal project documents the impact on local logistical environments, in particular through the integration of specific questions in the multi-sectoral needs analysis questionnaires (MIRA).



LVI map calculated in March 2019 within 15 days of Cyclone Idai in Mozambique. The map provides a comparison of logistics vulnerabilities at the district level.



Map illustrating the travel time needed for people to reach markets on foot; assessed by the Signal team in April 2021, in Masisi territory, DRC.

Project status

- Pilot project tested in various humanitarian contexts, including countries exposed to natural hazards and countries affected by complex and long-lasting conflicts.
- Implemented in 7 countries (Togo, Benin, Burkina Faso, Mali, Haiti, Madagascar, Niger) in 2021/2022.

Our activities are possible thanks to the support of: US-AID, IPSEN Foundation, Ministry of Foreign and European Affairs of Luxembourg and Federal Ministry of Foreign Affairs of Germany.



Signal is a project by Atlas Logistique, an operational unit of Handicap International – Humanity & Inclusion specialised in the delivery of aid, in support of organisations and the humanitarian system. Our mission is to maximise the impact of aid by optimising supply chains and opening humanitarian space to the most difficult-to-reach populations. We develop innovative solutions adapted to acute and chronic crisis contexts, in close collaboration with humanitarian, private and public actors.

**For more information, visit hi.org/atlas
or email us at atlas@hi.org.**