



© Gwenn Dubourthoumieu / HI

Logistics solutions for impactful humanitarian aid





Atlas Logistique is an operational unit of Handicap International - Humanity & Inclusion (HI), specialized in the delivery of aid, in support of organisations and the humanitarian system.

Our mission is to maximize the impact of aid by optimizing supply chains and opening humanitarian space to the most difficult-to-reach populations. We develop innovative solutions adapted to acute and chronic crisis contexts, in close collaboration with humanitarian, private and public actors.

Challenging logistics and poor infrastructure can limit access to aid for already vulnerable and isolated communities. These logistical constraints exacerbate security management challenges and diminish the effectiveness of humanitarian responses, or may even make them impossible.

Atlas Logistique acts according to an innovative and proactive approach to humanitarian logistics, which we see as a vector of humanitarian impact and not as a support function for operations. Based on contextual analyses, this “programmatic” logistics aims to make the humanitarian aid system more efficient, more inclusive of isolated populations and more respectful of the environment. Our approach also contributes

to the emergence of market actors as levers of resilience and local development.

Since 1991, we have been “helping those who help others”, intervening in contexts where physical and security access challenges and significant volumes of aid require the implementation of adapted logistics solutions. Our operations are based on four integrated pillars of intervention: common transportation and storage platforms, civil engineering for humanitarian access, logistics analysis and capacity building for humanitarian and private actors.



Every year, on average Atlas Logistique:

- **Distributes 20,000 tons** of humanitarian supplies
- **Stores 10,000 m³** of humanitarian aid
- **Collaborates** with nearly **60** partners (national, international, UN agencies)
- **Conducts** more than **180** road rehabilitation projects
- **Develops** several dozen capacity-building sessions (for transporters, conveyors and other humanitarian organisations)

Our expertise

Atlas Logistique's HQ team has about fifteen technical experts and expert flying staff. We have a pool of about 75 trained experts currently deployed or ready to deploy within 48 hours of an emergency to assess logistics needs and launch projects.

Our operations are based on four interacting intervention pillars:



Common transportation and storage platforms:

We mobilize local economic actors to provide transportation (road, air, sea and/or river) and storage solutions adapted to the logistical, operational and security challenges of the context. Our activities optimize aid resources in emergencies and complex emergencies, increase access to isolated communities, guarantee the quality and traceability of transport, limit the effects of inflation and promote coordination between response actors, the private sector and public authorities.

We establish logistics systems that connect different transportation and storage modalities and different skills and capacities (humanitarian monitoring, pre-positioning, emergency team deployments, security diagnostics, logistical vulnerability, accessibility etc.). These systems aim to proactively manage humanitarian aid supply chains, anticipating the delivery needs of first responders and facilitating their humanitarian needs assessments.



Civil engineering for humanitarian access:

From rubble clearance to the rehabilitation of roads, bridges and airways, we carry out civil engineering activities to address physical access concerns that may affect aid delivery. In conjunction with the monitoring of logistical vulnerabilities, our teams restore and consolidate transportation routes to the most isolated and vulnerable communities. In this way, we facilitate the access of humanitarian inputs and local actors to these communities, while opening affected areas and allowing the population to access services and aid. Our action thus benefits the entire humanitarian system, as well as local communities and actors.



© Paul Lorgerie/Hi



Logistics analysis:

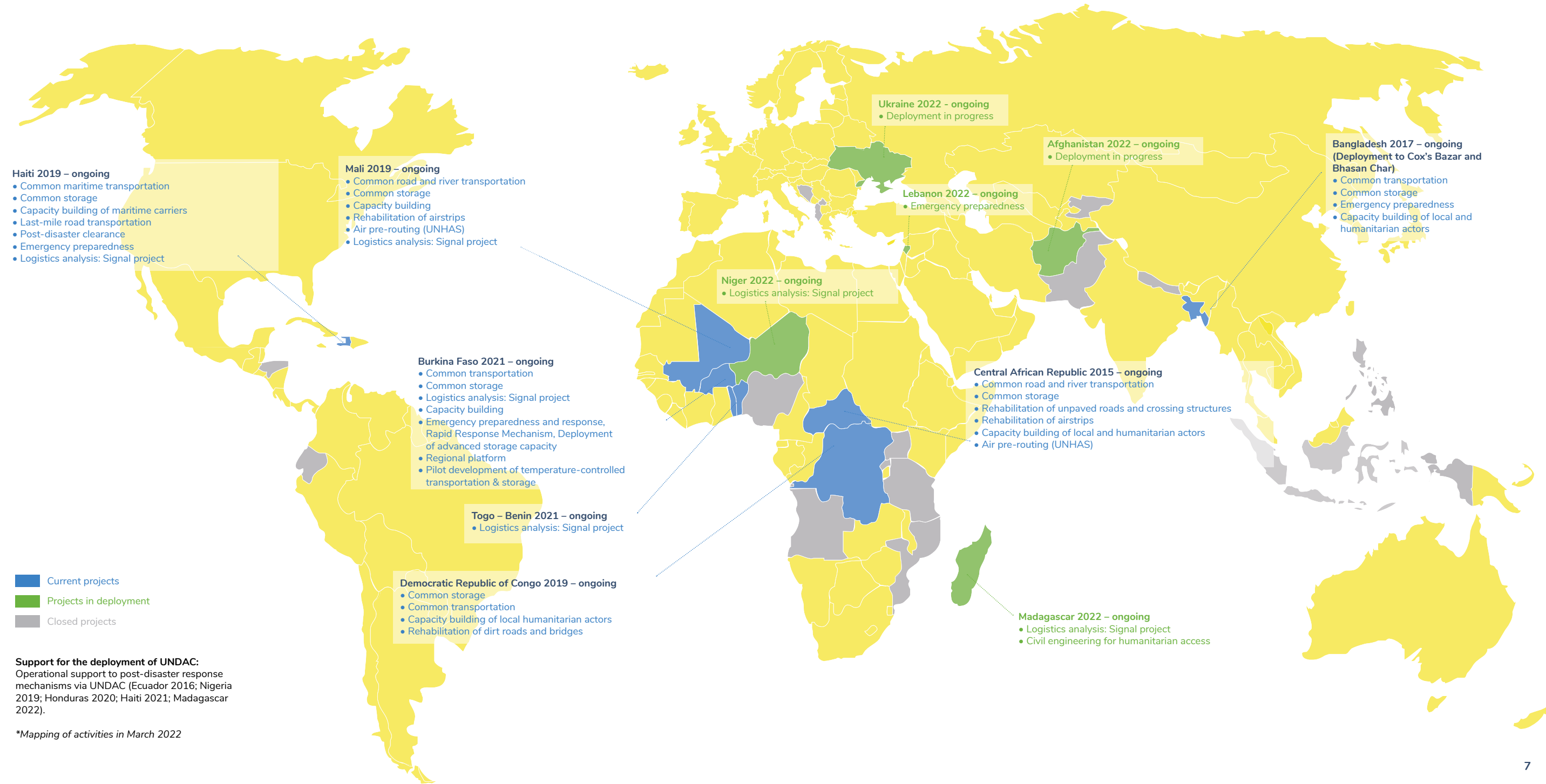
Logistics vulnerability analysis is a pillar of our programmatic logistics approach. We help humanitarian actors understand the most vulnerable populations in relation to their logistical environment. We thus contribute to the prioritization and planning of humanitarian resources in order to make aid strategies and operations more relevant, efficient and inclusive of the most difficult-to-access populations.



Capacity building:

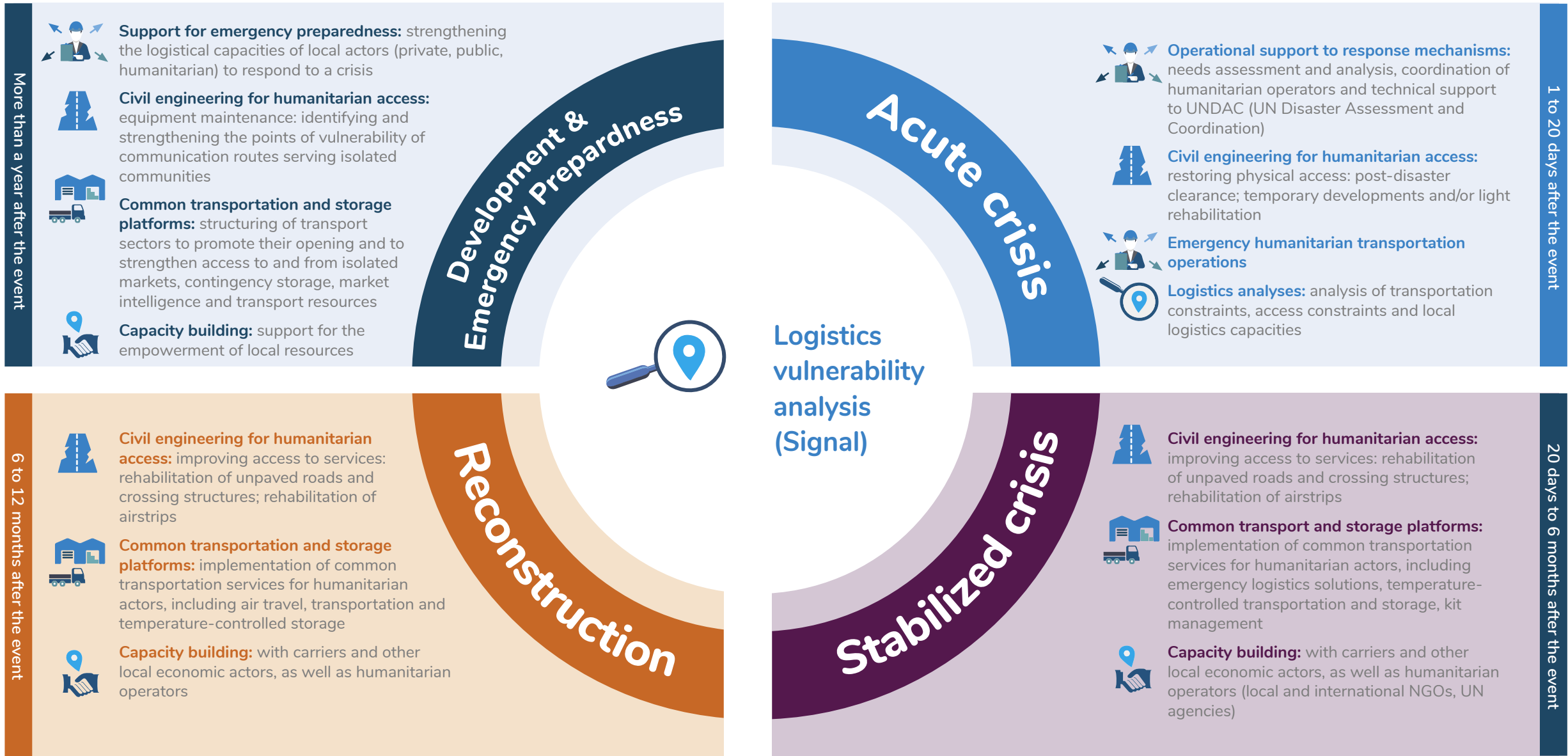
Our capacity-building activities for market actors contribute to the professionalization and economic development of the private transportation sector. They also increase the capacity of the private sector to respond autonomously to the needs of humanitarian actors and their target communities, and to better manage the security risks of the logistics environment. Furthermore, our capacity-building activities for humanitarian partners contribute to improving the efficiency of aid delivery to the most vulnerable populations.

Our activities in the field



Our intervention model

The below is an overview of our services in the humanitarian crisis cycle, in acute or chronic crises.



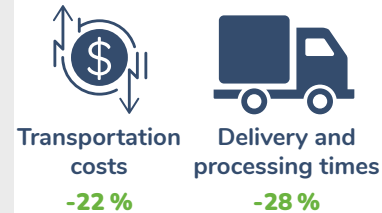
Our approach

Our programmatic logistics approach aims to optimize the impact of humanitarian aid. It is based on the following approaches:

Common service provision:

We provide common logistics solutions to support the efficacy of the supply chain. The pooling of resources allows humanitarian aid to be more responsive, ensures quality and traceability of freight, provides continuity of service while reducing costs, and optimizes distribution. By placing local resources at the heart of the response and structuring logistics flows on a national and local scale, our approach allows us to have a systemic impact well beyond the emergency response.

A scientific study conducted with the Otto Beisheim School of Management (WHU) shows that pooling of resources reduces direct transportation costs by at least 22% and reduces delivery times by 28%.



Mobilization and professionalisation of local resources:

We systematically mobilize local market actors in the implementation of our logistics solutions. This approach promotes the development and economic recovery of local markets. It also improves the resilience of decentralized logistics environments, notably through the structuring of transportation channels, the consolidation of routes and the strengthening of local transporters' capacities to meet the needs of humanitarian actors and their target communities.

Do No Harm:

Our activities are designed to limit the harmful effects of humanitarian aid by mobilizing local private resources and reducing the effects of inflation. Our interventions are based on the humanitarian principles of neutrality, impartiality, independence and humanity in order to guarantee the acceptance of aid and the sustainable management of supply chains. We are also working on developing new fields of expertise, transforming our intervention modalities and reinforcing our advocacy strategies to reduce the negative impacts, including environmental impacts, of humanitarian logistics on fragile contexts.

Nexus:

Atlas Logistique is enhancing its intervention modalities to integrate them into an aid continuum. To achieve this, we are developing strategies that integrate emergency preparedness activities and support to private and public actors to meet the challenges of aid delivery. We implement exit strategies that allow for the structuring and strengthening of local logistics channels, and the development of market actors' capacity to meet the needs of humanitarian actors and communities. Finally, we promote the inclusion of the most vulnerable in our civil engineering and logistics analysis activities.



A look at the Signal project

The Signal project aims to identify the degree of vulnerability and recovery capacity of communities in fragile contexts. It also makes it possible to promote the inclusion in humanitarian aid strategies of populations located in areas with the highest logistics constraints and thus strengthen their recovery capacity and resilience.



Analysis of logistics vulnerabilities

When humanitarian actors develop their aid strategies in acute or chronic crises, one of their key challenges is identifying which areas to prioritize. To respond to this challenge, Atlas Logistique offers a comparative and holistic approach to vulnerability via the concept of “logistics vulnerability”.

This concept uses logistics and access data as a reading grid to understand a population’s vulnerability and recovery capacity.

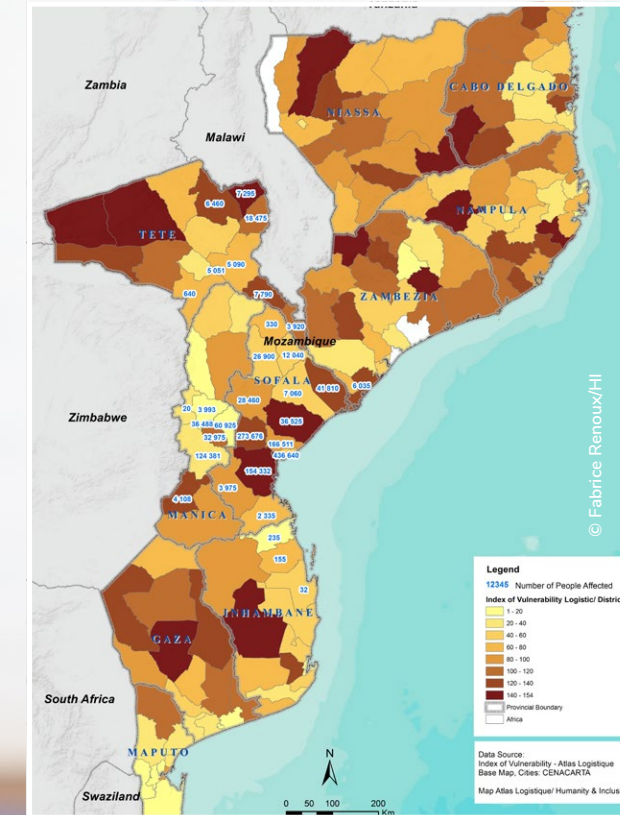
The objectives of the project

The Signal project aims to produce information, analyses and tools for preparedness and response to chronic and acute crises. It allows aid actors to:

- Improve the targeting and prioritisation of the least resilient populations;
- Understand and act on the most degraded logistics environments in order to improve the efficiency of humanitarian responses and the resilience of populations;
- Limit the negative impacts of humanitarian interventions on people’s recovery capacities.

The status of the project

Deployed in 2021/2022 in seven countries (Togo, Benin, Burkina Faso, Mali, Haiti, Madagascar, Niger), the project is currently in the pilot phase. It has been tested in different humanitarian contexts, including countries exposed to natural hazards and countries affected by complex and protracted conflicts.



Our partners and donors

Every year, on average, Atlas Logistique collaborates with about fifty partner organisations, including United Nations agencies (such as the World Food Programme, the Food and Agriculture Organization of the United Nations and the United Nations Children's Fund) and NGOs (such as Solidarités International, Action Against Hunger, Première Urgence Internationale, Agency for Technical Cooperation and Development, Save the Children, Medair, etc.).

Our donors include: USAID's Bureau for Humanitarian Assistance (BHA), the Crisis Centre of the French Ministry of Europe and Foreign Affairs (CDCS), the Foreign, Commonwealth & Development Office (FCDO), the Ministry of Foreign and European Affairs of Luxembourg, the Common Humanitarian Fund, the Swiss Agency for Development and Cooperation (SDC), the German Federal Foreign Office (GFFO), and the Directorate-General for European Civil Protection and Humanitarian Aid Operations (ECHO).

In acute crises, our actions are financed by institutional donors and are free for the humanitarian actors with whom we work. In some chronic crisis contexts, we charge the organisations using our services a portion of the direct operational expenses.

Atlas Logistique supports humanitarian coordination systems on humanitarian access and logistics issues. Our action thus benefits the entire humanitarian system, in particular humanitarian clusters (nutrition, food security, health, shelter and non-food items, WASH, Rapid Response Mechanisms) and OCHA.

Atlas Logistique is an operational unit of Handicap International - Humanity & Inclusion (HI), an independent and impartial humanitarian organisation working in situations of poverty and exclusion, conflict and disaster.

The organisation works alongside people with disabilities and vulnerable populations, taking action and bearing witness in order to respond to their essential needs, improve their living conditions and promote respect for their dignity and fundamental rights.

**To learn more, visit hi.org/atlas
or contact us at atlas@hi.org.**

